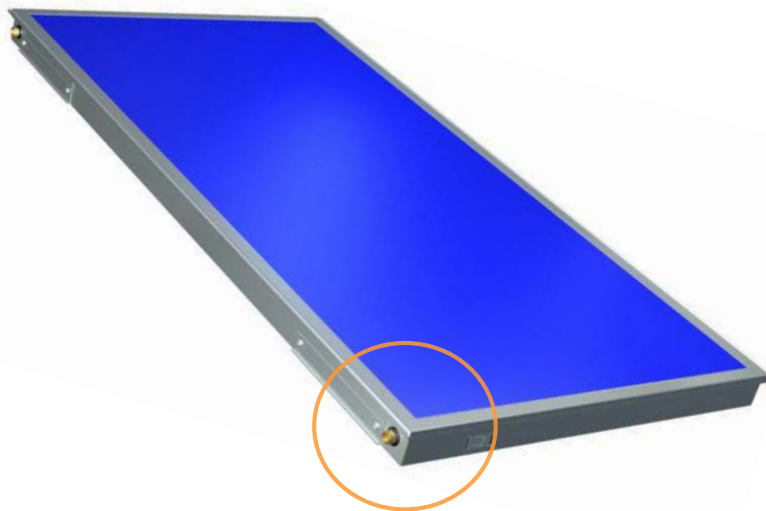


ferroli

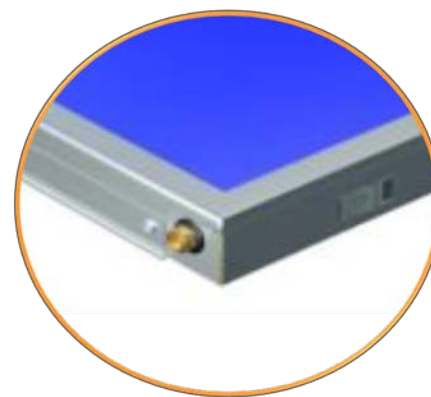


Panouri solare plane –Ecotop VHM

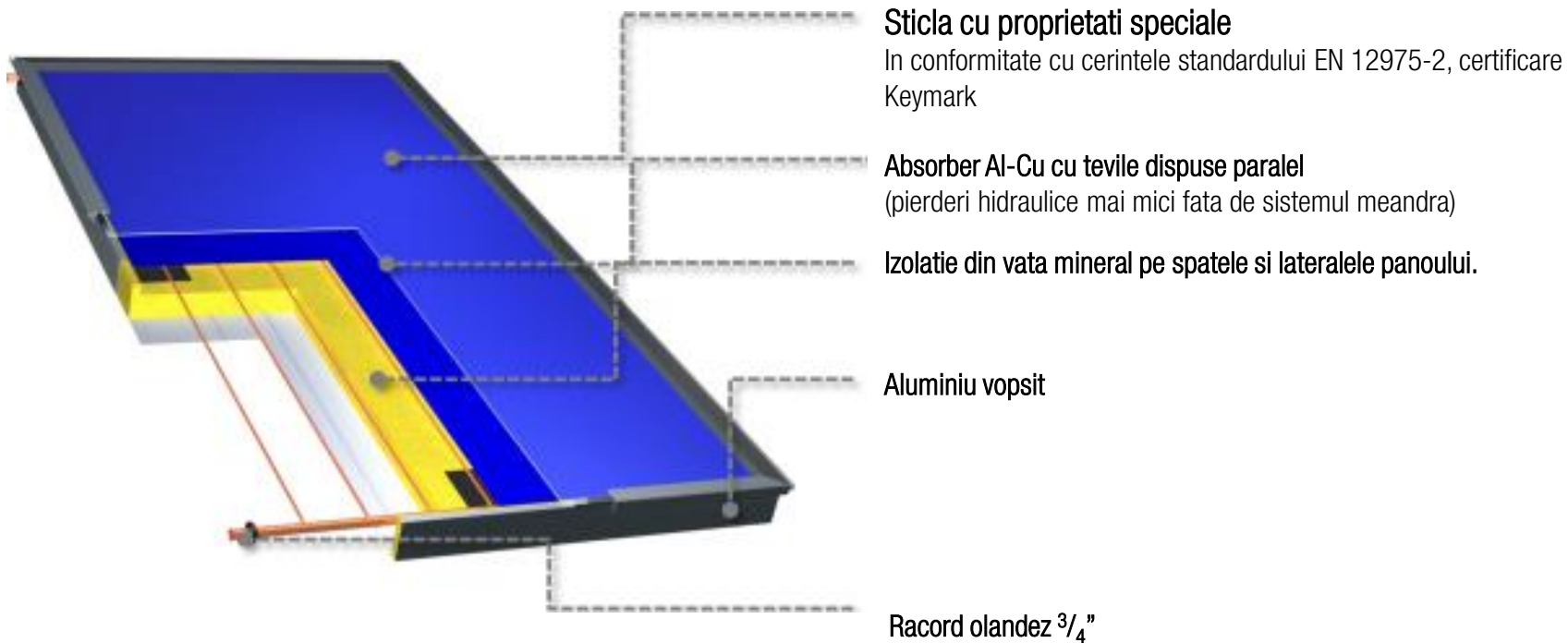
Noul panou solar plan ECOTOP VHM 2.1 / 2.7



- Inlocuieste ECOTOP VMFA
- Doua variante constructive 2.1 / 2.7
- Racorduri filetate,



Caratteristiche costruttive

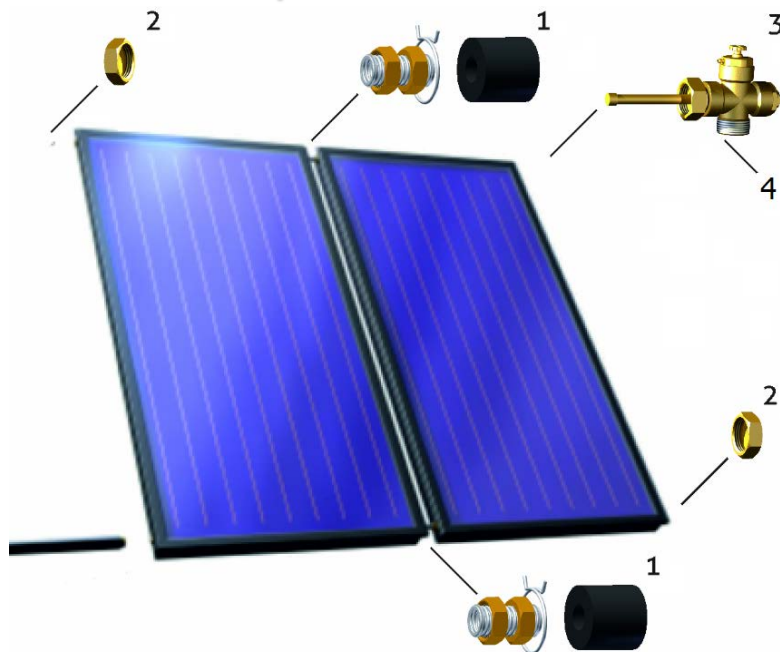


Caracteristici tehnice



- Raport excelent pret/ performanta
- Suprafata totala of 2.09 sau 2.65 m²
- Sticla speciala clasa U1 (grosime 3.2 mm)
- Absorber aluminiu-cupru sudat cu laser
- Absorber cu acoperire selectiva din PVD (absorbție 95/ emisie 5%)
- Racorduri olandeze 3/4"

Compenenta kit hidraulic de baza 072235X0



| No. | Descriere |
|-----|-------------------------------------|
| 1 | Racord cu holender si izolatie |
| 2 | Dop 3/4" |
| 3 | Aerisitor manual cu teaca de senzor |
| 4 | Cot cu racord |

Caracteristici tehnice

| Model | | 2,1 | 2,7 |
|--|---------------------------------|-------|-------|
| Suprafata totala | m ² | 2,09 | 2,65 |
| Suprafata utila | m ² | 1,82 | 2,36 |
| Latime (A) | mm | 1037 | 1314 |
| Inaltime (B) | mm | 2018 | 2018 |
| Grosime (C) | mm | 89 | 89 |
| Numar racorduri | n. | 4 | 4 |
| Dimensiuni racorduri | Ø | 3/4" | 3/4" |
| Factor de conversie η_0 (raportat la suprafata utila) | % | 80,8 | 80,8 |
| Coeficient de transfer de caldura a_1 (raportat la suprafata utila) | W/m ² K | 3,334 | 3,334 |
| Coeficient de transfer de caldura. a_2 (raportat la suprafata utila) | W/m ² K ² | 0,02 | 0,02 |
| Greutate | kg | 34,4 | 42,4 |
| Capacitate agent termic | l | 0,85 | 1,09 |
| Presiune maxima de lucru | bar | 6 | 6 |
| Temperatura de stagnare | °C | 204,9 | 204,9 |
| Caldura specifica ((raportat la suprafata utila) | kJ/m ² K | 4,93 | 4,93 |
| | | 0,95 | 0,95 |
| Debit agent termic | l/h | 1,8 | 2,2 |
| Debit maxim agent termic | l/h | 2,5 | 3 |
| Numar maxim de panouri in serie | n. | 8 | 8 |
| Absorber din aluminiu cu tratament de acoperire selectiv al suprafetei | | | |
| Absorbtie solara | % | 95 | 95 |
| Emisie termica | % | 5 | 5 |
| Grosime izolatie termica din vata minerala de inalta densitate | mm | 40 | 40 |
| Grosime sticla speciala | mm | 3,2 | 3,2 |
| Factor de transmisie | % | >90 | >90 |

